

the villas stretch along the eastern and western boundaries of the property all surrounded by vibrant tropical gardens, flowering trees and coconut palms...

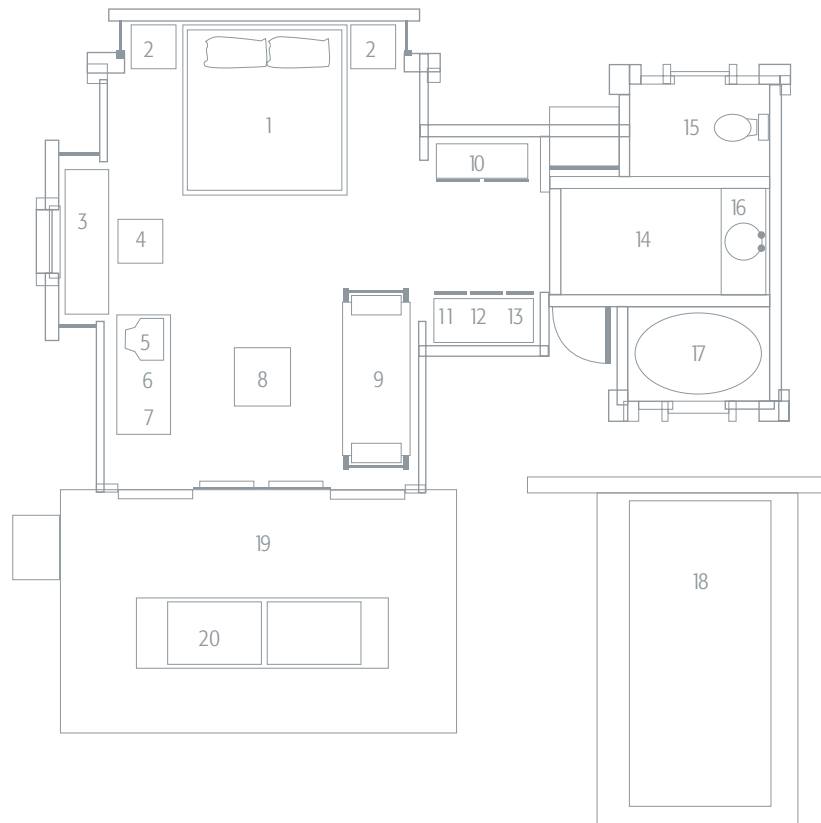
view the villas to the east face into the petanu river valley, while those on the west face the rice terraces of peliatan

size of room all villas are fifty (50) square meters in size including terrace

bedding the villas are furnished with a canopied bed with netting drapes. they have either one king size mattress (220 x 200 cm) or two single mattresses (100 x 200 cm) on the same bed base set 25 cm apart. an extra bed can be added to accommodate a third person after the sofa has been removed. only three (3) persons per room however, a baby cot may be added if required

facilities all villas have en suite bathrooms with bath tub and shower over the tub, air conditioning, colour satellite television, international direct dial telephone, refrigerator / mini bar, electronic in - room safe, tea / coffee making facilities hairdryer and terrace

- 01 canopied bed
- 02 bedside table
- 03 writing desk
- 04 chair
- 05 television
- 06 refrigerator / mini bar
- 07 tea / coffee maker
- 08 table
- 09 sofa
- 10 luggage rack



- 11 wardrobe
- 12 electronic safe
- 13 hair dryer
- 14 bathroom
- 15 toilet
- 16 wash basin
- 17 bathtub
- 18 swimming pool
- 19 terrace
- 20 sofa / day bed