

there are two accommodation wings ; one on the east and the other on the west side of the lobby  
each wing has twenty - four (24) rooms, located on three floors ; eight rooms per floor,  
with four rooms on either side of the corridor

on each floor there are two connecting rooms (one twin and one double)

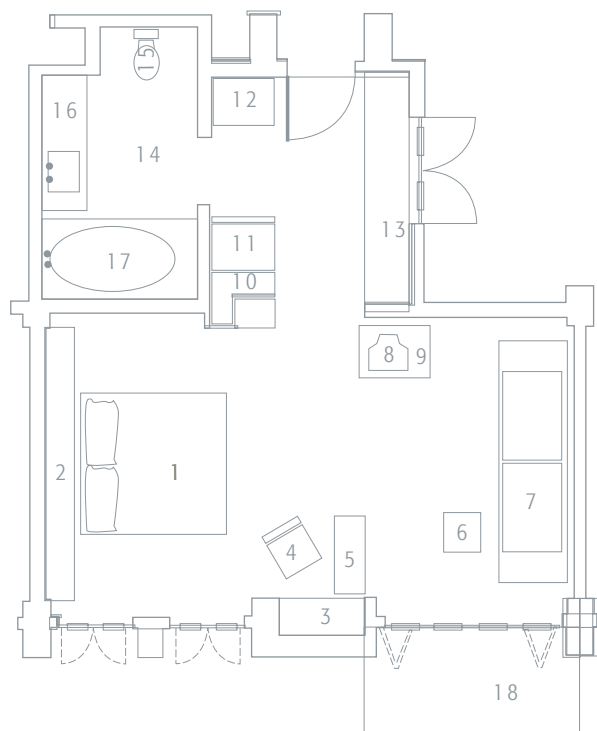
**view** rooms in the east wing face either up or down the petanu river valley. rooms in the west wing look out over the rice terraces of peliatan

**size of room** rooms are forty-three (43) square meters in size, including entrance hall, bathroom and balcony

**bedding** each room has either one king size bed (200 x 200 cm) or two separate single beds (100 x 200 cm). all rooms can accommodate a third person on the day bed/sofa. only three (3) persons per room however, a baby cot may be added if required

**facilities** all rooms have en suite bathrooms with bath tub and shower over the tub, air conditioning, colour satellite television, international direct dial telephone, refrigerator / mini bar, electronic in - room safe, tea / coffee making facilities, hairdryer and balcony

- 01 double bed
- 02 headboard
- 03 side table
- 04 chair
- 05 writing desk
- 06 table
- 07 day bed / sofa
- 08 television
- 09 refrigerator / mini bar



- 10 tea / coffee maker
- 11 wardrobe / hair dryer
- 12 wardrobe / electronic safe
- 13 baggage rack
- 14 bathroom
- 15 toilet
- 16 wash basin
- 17 bathtub
- 18 balcony