

the villas stretch along the eastern and western boundaries of the property all surrounded by vibrant tropical gardens, flowering trees and coconut palms...

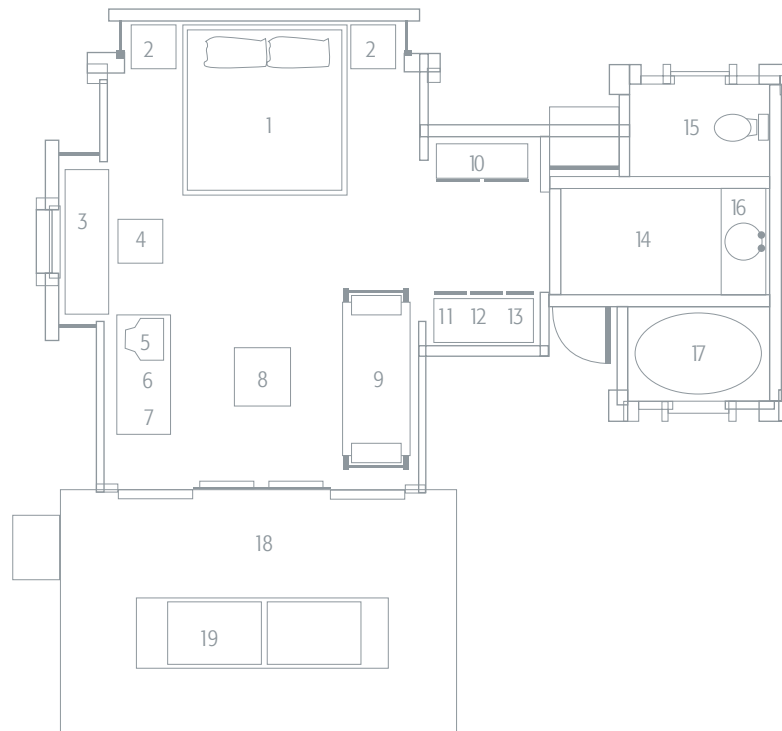
**view** the villas to the east face into the petanu river valley, while those on the west face the rice terraces of peliatan

**size of room** all villas are fifty (50) square meters in size including terrace

**bedding** the villas are furnished with a canopied bed with netting drapes. they have either one king size mattress (220 x 200 cm) or two single mattresses (100 x 200 cm) on the same bed base set 25 cm apart. an extra bed can be added to accommodate a third person after the sofa has been removed. only three (3) persons per room however, a baby cot may be added if required

**facilities** all villas have en suite bathrooms with bath tub and shower over the tub, air conditioning, colour satellite television, international direct dial telephone, refrigerator / mini bar, electronic in - room safe, tea / coffee making facilities hairdryer and terrace

- 01 canopied bed
- 02 bedside table
- 03 writing desk
- 04 chair
- 05 television
- 06 refrigerator / mini bar
- 07 tea / coffee maker
- 08 table
- 09 sofa
- 10 luggage rack



- 11 wardrobe
- 12 electronic safe
- 13 hair dryer
- 14 bathroom
- 15 toilet
- 16 wash basin
- 17 bathtub
- 18 terrace
- 19 sofa / day bed